

EXPERIENCE NEEDED IN THE 1939 ASSEMBLY

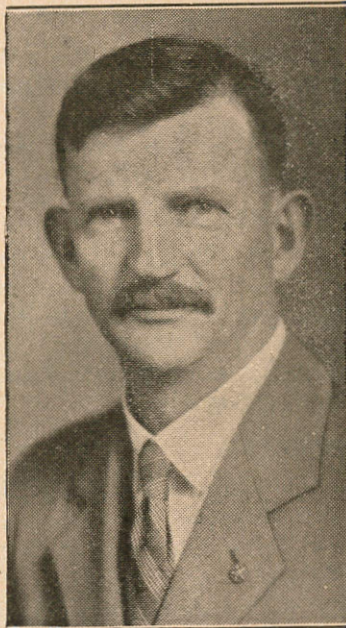
One third of the Members of the Assembly are not candidates for re-election. Impartial observers agree that the 1939 session will be the scene on many hectic debates over the political and economic problems now before our State. There will be need of all the experienced members available to handle this situation.

LEGISLATIVE RESPONSIBILITIES

The government of California is a business handling Four hundred and sixty million dollars. The legislature provides for taxation to raise this money, directs the spending of a large part thereof, which is of great importance to every man, woman and child in California. It is the legislature that determines the laws that govern every day life and business, family affairs, property rights, and provides in a large measure for the relief of the needy. Choose for your representative in the Assembly a man who has continually been put in places of trust and responsibility by his neighbors, a man who in his first term in the Assembly has proven his common sense, his courage to stand for the right, his ability to analyze the complex governmental activities of California and demonstrated his loyalty to American rights and liberties and his sympathy with the needs of the aged, the unemployed and the less fortunate citizens of our State.

Republican County
Central Committee

RE-ELECT



Assemblyman

**Nelson S.
DILWORTH**

Experienced, Energetic, Practical

**Twenty-six years of
DEPENDABLE PUBLIC SERVICE
in Riverside County.**

**Your support will be greatly
appreciated**

General election November 8, 1938

PUBLIC SERVICE

Elected to the Assembly. 1936.

Former Assistant Clerk of the Assembly.

Promoted from carrier to Postmaster at Hemet.

President of Riverside County Postmasters Association, 1932.

MILITARY RECORD

Enlisted in the United States Army in 1917. Sent overseas in early regiment. Served in action in France.

Organized Post of World War Veterans at Hemet in 1919 and chosen their first Commander.

CIVIC LEADER

Secretary Coachella Chamber of Commerce 1912-14.

President Hemet Chamber of Commerce 1935-1936.

President Riverside County Chamber of Commerce 1934-1935.

FARM INTERESTS

Farm boy in this County, farm laborer, small farm owner.

Active member of farm organizations.

PERSONAL

Age, 48 years.

Family: Mr. and Mrs. Dilworth have three sons.

Active in Child Welfare projects.

Thirty-six years residence in Riverside County.

LEGISLATIVE INTERESTS.

Author of five bills that received approval and became a law, including the Act to establish wild flower reserves on public land along main highways.

Successfully opposed the bill to abolish joint tenancy of property by husbands and wives. This bill would have greatly increased the legal expense of widows with small estates.

Favored anti-usury bills to limit extortionate interest charges now legal in California.

Supported every appropriation requested by the Governor for unemployment relief.

Mr. Dilworth has not sought the employment of any relative in state service and none has been on the state pay roll.